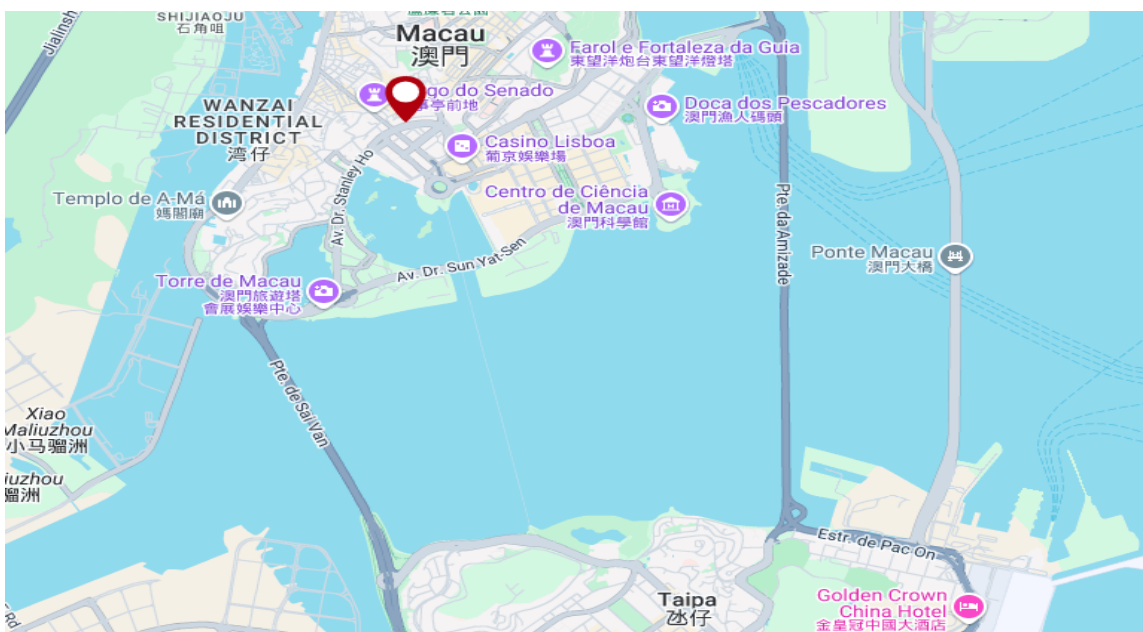


## Notice

Due to lease expiry, Nova Grand Sub-Branch will be merged with HSBC Macau Main Branch, 639 Avenida da Praia Grande, Macau Peninsula (see the map below for the location) after the close of business on 31 Oct 2025.

You are welcome to visit HSBC Macau Main Branch from 3 Nov 2025 for all banking services. HSBC is committed to providing you excellent products and services.



For any enquiries, please contact customer service hotline at (853) 8599 2888 from Monday to Sunday at 9am - 11pm or contact our branch staff.

The Hongkong and Shanghai Banking Corporation Limited, Macau Branch